

NEURO CHECK

Industrial Vision Systems



Product Catalog 2021

This product catalog is valid as of February, 2021.
All previous product catalogs cease to be valid.

Subject to changes and errors.

NeuroCheck GmbH

Neckarstraße 76/1

71686 Remseck • Germany

Phone +49 7146 8956-0

Fax +49 7146 8956-29

Email sales@neurocheck.com

Internet www.neurocheck.com

Table of contents

NEUROCHECK SOFTWARE	4
MULTI LICENSE LEVELS	6
PLUG-IN EXTENSIONS (EXTRA LICENSING).....	8
DRIVER AND DATA FORMAT CONVERTER EXTENSIONS (EXTRA LICENSING).....	9
PLUG-IN EXTENSIONS (PRODUCTS)	11
GIGABIT-ETHERNET AREA-SCAN CAMERAS (MONOCHROME/COLOR)	13
LINE-SCAN CAMERAS	21
LIGHT SOURCES	22
GIGABIT-ETHERNET BOARDS.....	24
LENSES	25
COMMUNICATION	27
CABLES.....	29

Item No.	Description
----------	-------------

NeuroCheck Software



NeuroCheck Version 6.2

NC-62S-PRE

NeuroCheck V 6.2 Premium Edition (USB)
 Developer Edition for interactive development and operation of vision applications including programming interface.

The universal application software for industrial vision systems for developing visual inspection systems for all areas of manufacturing.

- + Interactive language switching at runtime.
- + Graphical user interface for check-routine development.
- + Formula editor to calculate and modify parameters and result values.
- + Integrated device manager for 1D, 2D, 3D-cameras and industrial bus communications.
- + Graphical tools for automatic mode screen design.
- + Automatic shop-floor operation with process communication.
- + Powerful and fast image processing algorithms.
- + Programming interface to develop and integrate plug-in functions.

The Premium Edition also includes these additional licenses:

- + NcFmtCnv.NeuroCheck.CustomFile.NET.dll
- + PI_HalconWrapper.NET.dll
- + PI_CodeReaderXNC.NET.dll
- + PI_ContourMatchXNC.NET.dll.

Please note that the hardware key (dongle) constitutes the value of the purchased program.

Item No.	Description
NC-62S-PRO	<p>NeuroCheck V 6.2 Professional Edition (USB) Developer Edition for interactive development and operation of vision applications.</p> <p>The universal application software for industrial vision systems for developing visual inspection systems for all areas of manufacturing.</p> <ul style="list-style-type: none"> + Interactive language switching at runtime. + Graphical user interface for check-routine development. + Formula editor to calculate and modify parameters and result values. + Integrated device manager for 1D, 2D, 3D-cameras and industrial bus communications. + Graphical tools for automatic mode screen design. + Automatic shop-floor operation with process communication. + Powerful and fast image processing algorithms. <p>The Professional Edition also includes these additional licenses:</p> <ul style="list-style-type: none"> + NcFmtCnv.NeuroCheck.CustomFile.NET.dll + PI_HalconWrapper.NET.dll + PI_CodeReaderXNC.NET.dll + PI_ContourMatchXNC.NET.dll. <p>Please note that the hardware key (dongle) constitutes the value of the purchased program.</p>
NC-62S-RT	<p>NeuroCheck V 6.2 Runtime Edition (USB) Runtime Edition for a completely configured application.</p> <p>The universal application software for industrial vision systems. The Runtime Edition comprises the entire image processing functionality of the Professional or Premium Edition excluding manual mode for configuration applications.</p> <ul style="list-style-type: none"> + Interactive language switching at runtime. + Automatic shop-floor operation with process communication. + Powerful and fast image processing algorithms. <p>Please note that the hardware key (dongle) constitutes the value of the purchased program.</p>

Item No.	Description
----------	-------------

Multi license levels



Please note:

- When using these software license levels, you can operate up to four parallel NeuroCheck software instances on one computer with each instance processing one NeuroCheck project. Thus you can run several, completely independent and non-synchronized image processing systems on a single computer.

NC-62M-PRE

**NeuroCheck V 6.2 Premium Multi Edition (USB)
Developer Edition for interactive development and parallel operation of multiple applications on one computer, including programming interface.**

The universal application software for industrial vision systems for developing visual inspection systems for all areas of manufacturing.

- + Interactive language switching at runtime.
- + Graphical user interface for check-routine development.
- + Formula editor to calculate and modify parameters and result values.
- + Integrated device manager for 1D, 2D, 3D-cameras and industrial bus communications.
- + Graphical tools for automatic mode screen design.
- + Automatic shop-floor operation with process communication.
- + Powerful and fast image processing algorithms.
- + Programming interface to develop and integrate plug-in functions.

The Premium Edition also includes these additional licenses:

- + NcFmtCnv.NeuroCheck.CustomFile.NET.dll
- + PI_HalconWrapper.NET.dll
- + PI_CodeReaderXNC.NET.dll
- + PI_ContourMatchXNC.NET.dll.

Please note that the hardware key (dongle) constitutes the value of the purchased program.

NC-62M-RT

**NeuroCheck V 6.2 Runtime Multi Edition (USB)
Runtime Edition for multiple completely configured applications on one computer.**

The universal application software for industrial vision systems. The Runtime Edition comprises the entire image processing functionality

- of the Professional or Premium Edition excluding manual mode for configuration applications.
- + Interactive language switching at runtime.
- + Automatic shop-floor operation with process communication.
- + Powerful and fast image processing algorithms.

Please note that the hardware key (dongle) constitutes the value of the purchased program.

Item No.	Description
----------	-------------

Upgrades

Please note that after applying a NeuroCheck 6.2 license upgrade there is no compatibility with older NeuroCheck 5.1 installations.
 The 6.2 dongle will not be accepted by a NeuroCheck installation of version 5.1 older than service pack 11, it will only run in Demo mode!

NC-62-UPDATE/PRE	Upgrade NeuroCheck V6.1 Premium to V6.2 Premium
NC-62-UPDATE/PRO	Upgrade NeuroCheck V6.1 Professional to V6.2 Professional
NC-62-UPDATE/RT	Upgrade NeuroCheck V6.1 Runtime to V6.2 Runtime
NC-62-UPDATE/P-M	Update NeuroCheck V6.1 Premium Multi to V6.2 Premium Multi
NC-62-UPDATE/R-M	Update NeuroCheck V6.1 Runtime Multi to V6.2 Runtime Multi
NC-62-UPGRADE/01	Upgrade NeuroCheck V6.2 Runtime to Professional
NC-62-UPGRADE/02	Upgrade NeuroCheck V6.2 Runtime to Premium
NC-62-UPGRADE/03	Upgrade NeuroCheck V6.2 Professional to Premium
NC-62-UPGRADE/04	Upgrade NeuroCheck Version 6.2 Runtime to Runtime Multi-Edition
NC-62-UPGRADE/05	Upgrade NeuroCheck V6.2 Premium to Premium Multi-Edition

Item No.	Description
----------	-------------

Plug-in extensions (extra licensing)

Please note:

- Plug-in software extensions listed in this section are licensed for single use on one computer only and therefore are bound to a specific NeuroCheck license.
- Please note that for creation of a check routine containing plug-in check functions a NeuroCheck 6.2 Premium Edition is required.

NC-3420/U-F

PI_ContourMatch.NET.dll

This NeuroCheck 6.2 plug-in contains a contour based search algorithm to find patterns (models) within an image using the external library MIL 10.0. For details please refer to help file PI_ContourMatch.NET.chm.

NC-3430/U-F

PI_CodeReader.NET.dll

This NeuroCheck 6.2 plug-in is used to read several 2D codes and 1D bar codes using the external library MIL 10.0. For details please refer to help file PI_CodeReader.NET.chm.

NC-3440-F

PI_HalconWrapper.NET.dll

This NeuroCheck 6.2 plug-in is used to execute HDevelop programs for the external HALCON library. It is possible to use objects from the NeuroCheck data tray and register cells as input or output for the programs. For details please refer to help file PI_HalconWrapper.NET.chm.
(already included in the Professional and Premium Edition)

NC-3450-F

PI_LensFocusControl.NET.dll

This NeuroCheck 6.2 plug-in allows to change the focus value of a Optotune's electrically tunable lense dynamically. For details please refer to help file PI_LensFocusControl.NET.chm.

Item No.	Description
----------	-------------

Driver and data format converter extensions (extra licensing)

Please note:

- Software extensions listed in this section are licensed for single use on one computer only and therefore are bound to a specific NeuroCheck license.
- Please note that for configuration of hardware drivers and data format converters a NeuroCheck 6.2 Professional Edition is required.

NC-3461-F	<p>Nc3D.NeuroCheck.EN.dll:</p> <p>This NeuroCheck 6.2 hardware driver integrates selected models of the “N” series stereo 3D cameras of manufacturer Ensenso as a 3D camera device in NeuroCheck software.</p>
NC-3462-F	<p>Nc3D.NeuroCheck.Generic.dll:</p> <p>This NeuroCheck 6.2 hardware driver integrates various 3D cameras of selected manufacturers as a 3D camera device in NeuroCheck software.</p>
NC-3435-F	<p>NcFb.InterComm.NET.dll:</p> <p>NeuroCheck 6.2 driver for interprocess-communication + between multiple NeuroCheck instances on the same PC or over the network + between NeuroCheck and NCRoboDirector</p> <p>For details please refer to help file NcFb.InterComm.NET.chm.</p>
NC-3443-F	<p>NcFmtCnv.NeuroCheck.DatabaseStandard.NET.dll</p> <p>This NeuroCheck 6.2 Data Format Converter is used to connect and exchange data from and to a local database using SQL statements.</p>
NC-3444-F	<p>NcFmtCnv.NeuroCheck.FieldbusFlowControl.NET.dll</p> <p>This NeuroCheck 6.2 Data Format Converter contains a special sequence control system that allows starting a sequence of check routine executions including type changes by a single start signal from field bus.</p>

Item No.	Description
NC-3445-F	<p data-bbox="572 349 839 394">NcFmtCnv.NeuroCheck. SerialFlowControl.NET.dll</p> <p data-bbox="572 423 1246 517">This NeuroCheck 6.2 Data Format Converter contains a special sequence control system that allows starting a sequence of check routine executions including type changes by a single start signal from a serial device (RS232, TCP/IP).</p>
NC-3442-F	<p data-bbox="572 613 820 658">NcFmtCnv.NeuroCheck. CustomFile.NET.dll</p> <p data-bbox="572 687 1206 781">This NeuroCheck 6.2 Data Format Converter writes data into a readable text file (TXT, XML or HTML files for instance) in a custom file format. The file format is defined as template file using place holders.</p>
NC-3446-F	<p data-bbox="572 878 994 900">NcFmtCnv.NeuroCheck.OPCUA.NET.DLL</p> <p data-bbox="572 929 1230 1043">This NeuroCheck 6.2 Data Format Converter acts as a OPC UA Client application and allows data transfer between NeuroCheck and a OPC UA Server. For details please refer to help file NcFmtCnv.NeuroCheck.OPCUA.UI.NET.chm.</p>

Item No.	Description
----------	-------------

Plug-in extensions (products)

Please note:

- Plug-in software extensions listed in this section may be used several times in different projects.
- Please note that for creation of a check routine containing plug-in check functions a NeuroCheck 6.2 Premium Edition is required.

NC-3494	PI_Distortion.NET.dll This NeuroCheck 6.2 plug-in contains functions to determine the geometric distortion in an image and minimizes the distortion like radial lens distortion or perspective by transforming the image. For details please refer to help file PI_Distortion.NET.chm.
NC-3488	PI_CoordinateTransformation.NET.dll This NeuroCheck 6.2 plug-in allows to perform a two-dimensional coordinate transformation for the center points of objects found in the current image. For details please refer to help file PI_CoordinateTransformation.NET.chm.
NC-3482	PI_RoiTools.NET.dll This NeuroCheck 6.2 plug-in contains different plug-in check functions for creation or modification of list of ROIs. For details please refer to help file PI_RoiTools.NET.chm.
NC-3480	PI_ImageTools.NET.dll This NeuroCheck 6.2 plug-in contains different plug-in check functions for creation or modification of images. For details please refer to help file PI_ImageTools.NET.chm.
NC-3481	PI_MeasTools.NET.dll This NeuroCheck 6.2 plug-in contains different plug-in check functions for creation or modification of measurement lists. For details please refer to help file PI_MeasTools.NET.chm.

Item No.	Description
NC-3471	<p data-bbox="572 347 754 369">PI_Gauge.NET.dll</p> <p data-bbox="572 398 1230 470">This NeuroCheck 6.2 plug-in is used to gauge a part of an object contour with a special calliper rule. For details please refer to help file PI_Gauge.NET.chm.</p>
NC-3473	<p data-bbox="572 593 815 616">PI_ManualInput.NET.dll</p> <p data-bbox="572 645 1241 716">This NeuroCheck 6.2 plug-in contains plug-in check functions which allow a synchronous user input of data in automatic mode. For details please refer to help file PI_ManualInput.NET.chm.</p>
NC-3496	<p data-bbox="572 840 820 862">PI_DataRegister.NET.dll</p> <p data-bbox="572 891 1214 985">This NeuroCheck 6.2 plug-in contains different plug-in check functions for modification or special use cases of data register cells. For details please refer to help file PI_DataRegister.NET.chm.</p>
NC-3475	<p data-bbox="572 1086 863 1108">PI_FileManagement.NET.dll:</p> <p data-bbox="572 1137 1230 1232">This NeuroCheck 6.2 plug-in contains functions to manage files on hard disc and network storages, for instance copy, move, zip and delete operations. For details please refer to help file PI_FileManagement.NET.chm.</p>

Item No.	Description
----------	-------------

Gigabit-Ethernet Area-Scan Cameras (monochrome/color)

NCLT-50C.I



10-GigE Area Scan Camera NCLT-50C.I **NEW!**

C-Mount
 2/3"-CMOS sensor, progressive scan, color
 Resolution: 2448 × 2048 pixels
 Pixel size: 3.45 μm × 3.45 μm
 Frame rate: max. 163 fps
 Data interface: M12 / 8 pol X-coded
 Processs interface: M12 / 12 pol A-coded
 Electrical data:
 • external: U: 12 ... 24 V DC, P: 10.3 W @ 12 V DC
 • PoE: not supported
 IOs: 2 digital Inputs and 4 digital Outputs
 (continuously max. 1.5 A; PWM max. 2.5 A)
 Lens control for Corning Varioptic
 Dimensions (WxHxD in mm): 60 x 60 x 99,7
 ((Lens tube is an optional accessory)

NCCG-13M.I



GigE Area Scan Camera NCCG-13M.I

C-Mount
 1/2"-CMOS sensor, progressive scan, monochrome
 Resolution: 1280 × 1024 pixels
 Pixel size: 4,8 μm × 4,8 μm
 Frame rate: max. 94 fps
 Data interface: M12 / 8 pol X-coded
 Processs interface: M12 / 12 pol A-coded
 Electrical data:
 • extern: U: 12 ... 24 VDC, P: 2,5 W @ 12 VDC
 • PoE: U: 36 ... 57 V DC, P: 3,0 W @ 48 VDC
 4 digital Inputs
 4 digital Outputs (with PWM, max. 48 V / max. 2,5 A)
 Dimensions: 40 mm x 40 mm x 51 mm
 Protection: IP 65/67 (with mounted tube and cable)

NCCG-13C.I



GigE Area Scan Camera NCCG-13C.I

C-Mount
 1/2"-CMOS sensor, progressive scan, color
 Resolution: 1280 × 1024 pixels
 Pixel size: 4,8 μm × 4,8 μm
 Frame rate: max. 94 fps
 Data interface: M12 / 8 pol X-coded
 Processs interface: M12 / 12 pol A-coded
 Electrical data:
 • extern: U: 12 ... 24 VDC, P: 2,5 W @ 12 VDC
 • PoE: U: 36 ... 57 V DC, P: 3,0 W @ 48 VDC
 4 digital Inputs
 4 digital Outputs (with PWM, max. 48 V / max. 2,5 A)
 Dimensions: 40 mm x 40 mm x 51 mm
 Protection: IP 65/67 (with mounted tube and cable)

Item No.	Description
----------	-------------

NCCG-15M.I



GigE Area Scan Camera NCCG-15M.I

C-Mount
 1/2.9"-CMOS sensor, progressive scan, monochrome
 Resolution: 1440 × 1080 pixels
 Pixel size: 3,45 µm x 3,45 µm
 Frame rate: max. 121 fps
 Data interface: M12 / 8 pol X-coded
 Processs interface: M12 / 12 pol A-coded
 Electrical data:
 • extern: U: 12 ... 24 VDC, P: 2,5 W @ 12 VDC
 • PoE: U: 36 ... 57 V DC, P: 3,0 W @ 48 VDC
 4 digital Inputs
 4 digital Outputs (with PWM, max. 48 V / max. 2,5 A)
 Dimensions: 40 mm x 40 mm x 51 mm
 Protection: IP 65/67 (with mounted tube and cable)

NCCG-15C.I



GigE Area Scan Camera NCCG-15C.I

C-Mount
 1/2.9"-CMOS sensor, progressive scan, color
 Resolution: 1440 × 1080 pixels
 Pixel size: 3,45 µm x 3,45 µm
 Frame rate: max. 121 fps
 Data interface: M12 / 8 pol X-coded
 Processs interface: M12 / 12 pol A-coded
 Electrical data:
 • extern: U: 12 ... 24 VDC, P: 2,5 W @ 12 VDC
 • PoE: U: 36 ... 57 V DC, P: 3,0 W @ 48 VDC
 4 digital Inputs
 4 digital Outputs (with PWM, max. 48 V / max. 2,5 A)
 Dimensions: 40 mm x 40 mm x 51 mm
 Protection: IP 65/67 (with mounted tube and cable)

NCCG-32M.I



GigE Area Scan Camera NCCG-32M.I

C-Mount
 1/1.8"-CMOS sensor, progressive scan, monochrome
 Resolution: 2048 × 1536 pixels
 Pixel size: 3,45 µm x 3,45 µm
 Frame rate: max. 39 fps
 Data interface: M12 / 8 pol X-coded
 Processs interface: M12 / 12 pol A-coded
 Electrical data:
 • extern: U: 12 ... 24 VDC, P: 2,3 W @ 12 VDC
 • PoE: U: 36 ... 57 V DC, P: 2,9 W @ 48 VDC
 4 digital Inputs
 4 digital Outputs (with PWM, max. 48 V / max. 2,5 A)
 Dimensions: 40 mm x 40 mm x 51 mm
 Protection: IP 65/67 (with mounted tube and cable)

Item No.	Description
----------	-------------

NCCG-32C.I



GigE Area Scan Camera NCCG-32C.I
C-Mount
 1/1,8"-CMOS sensor, progressive scan, color
 Resolution: 2048 × 1536 pixels
 Pixel size: 3,45 µm x 3,45 µm
 Frame rate: max. 39 fps
 Data interface: M12 / 8 pol X-coded
 Processs interface: M12 / 12 pol A-coded
 Electrical data:
 • extern: U: 12 ... 24 VDC, P: 2,4 W @ 12 VDC
 • PoE: U: 36 ... 57 V DC, P: 3,1 W @ 48 VDC
 4 digital Inputs
 4 digital Outputs (with PWM, max. 48 V / max. 2,5 A)
 Dimensions: 40 mm x 40 mm x 51 mm
 Protection: IP 65/67 (with mounted tube and cable)

NCCG-51M.I



GigE Area Scan Camera NCCG-51M.I
C-Mount
 2/3" CMOS sensor, progressive scan, monochrome
 Resolution: 2448 x 2048 pixels
 Pixel size: 3,45 µm x 3,45 µm
 Frame rate: max. 23 fps
 Data interface: M12 / 8 pol X-coded
 Processs interface: M12 / 12 pol A-coded
 Electrical data:
 • extern: U: 12 ... 24 VDC, P: 2,3 W @ 12 VDC
 • PoE: U: 36 ... 57 V DC, P: 3,1 W @ 48 VDC
 4 digital Inputs
 4 digital Outputs (with PWM, max. 48 V / max. 2,5 A)
 Dimensions: 40 mm x 40 mm x 51 mm
 Protection: IP 65/67 (with mounted tube and cable)

NCCG-51C.I



GigE Area Scan Camera NCCG-51C.I
C-Mount
 2/3" CMOS sensor, progressive scan, color
 Resolution: 2448 x 2048 pixels
 Pixel size: 3,45 µm x 3,45 µm
 Frame rate: max. 23 fps
 Data interface: M12 / 8 pol X-coded
 Processs interface: M12 / 12 pol A-coded
 Electrical data:
 • extern: U: 12 ... 24 VDC, P: 2,5 W @ 12 VDC
 • PoE: U: 36 ... 57 V DC, P: 3,0 W @ 48 VDC
 4 digital Inputs
 4 digital Outputs (with PWM, max. 48 V / max. 2,5 A)
 Dimensions: 40 mm x 40 mm x 51 mm
 Protection: IP 65/67 (with mounted tube and cable)

Item No.	Description
----------	-------------

NCCG-124M.I



GigE Area Scan Camera NCCG-124M.I

C-Mount
 1,1"-CMOS sensor, progressive scan, monochrome
 Resolution: 4096 × 3000 pixels
 Pixel size: 3,45 µm × 3,45 µm
 Frame rate: max. 10 fps
 Data interface: M12 / 8 pol X-coded
 Processs interface: M12 / 12 pol A-coded
 Electrical data:
 • extern: U: 12 ... 24 VDC, P: 2,5 W @ 12 VDC
 • PoE: U: 36 ... 57 V DC, P: 3,2 W @ 48 VDC
 4 digital Inputs
 4 digital Outputs (with PWM, max. 48 V / max. 2,5 A)
 Dimensions: 40 mm x 40 mm x 51 mm
 Protection: IP 65/67 (with mounted tube and cable)




NCCG-124C.I



GigE Area Scan Camera NCCG-124C.I

C-Mount
 1,1"-CMOS sensor, progressive scan, color
 Resolution: 4096 × 3000 pixels
 Pixel size: 3,45 µm × 3,45 µm
 Frame rate: max. 10 fps
 Data interface: M12 / 8 pol X-coded
 Processs interface: M12 / 12 pol A-coded
 Electrical data:
 • extern: U: 12 ... 24 VDC, P: 2,6 W @ 12 VDC
 • PoE: U: 36 ... 57 V DC, P: 3,2 W @ 48 VDC
 4 digital Inputs
 4 digital Outputs (with PWM, max. 48 V / max. 2,5 A)
 Dimensions: 40 mm x 40 mm x 51 mm
 Protection: IP 65/67 (with mounted tube and cable)

Item No.	Description
NCCG-13M	<p data-bbox="572 376 938 398">GigE Area Scan Camera NCCG-13M</p> <p data-bbox="572 427 663 450">C-Mount</p> <p data-bbox="572 450 1098 472">1/2" CMOS sensor, progressive scan, monochrome</p> <p data-bbox="572 472 884 495">Resolution: 1280 × 1024 pixels</p> <p data-bbox="572 495 842 517">Pixel size: 4.8 μm x 4.8 μm</p> <p data-bbox="572 517 810 539">Frame rate: max. 94 fps</p> <p data-bbox="572 539 1043 562">GigE output: standard RJ45 female connector</p> <p data-bbox="572 562 724 584">Electrical data:</p> <ul data-bbox="572 584 995 640" style="list-style-type: none"> • external: U: 24 V DC, I: 108 mA, P: 2,6 W • PoE: U: 48 V DC, I: 87 mA, P: 4.2 W <p data-bbox="572 640 959 663">Dimensions: 29 mm x 29 mm x 56 mm</p>
	
NCCG-13C	<p data-bbox="572 757 938 779">GigE Area Scan Camera NCCG-13C</p> <p data-bbox="572 808 663 831">C-Mount</p> <p data-bbox="572 831 1015 853">1/2" CMOS sensor, progressive scan, color</p> <p data-bbox="572 853 884 875">Resolution: 1280 × 1024 pixels</p> <p data-bbox="572 875 842 898">Pixel size: 4.8 μm x 4.8 μm</p> <p data-bbox="572 898 810 920">Frame rate: max. 94 fps</p> <p data-bbox="572 920 1043 943">GigE output: standard RJ45 female connector</p> <p data-bbox="572 943 724 965">Electrical data:</p> <ul data-bbox="572 965 995 1021" style="list-style-type: none"> • external: U: 24 V DC, I: 108 mA, P: 2,6 W • PoE: U: 48 V DC, I: 87 mA, P: 4.2 W <p data-bbox="572 1021 959 1043">Dimensions: 29 mm x 29 mm x 56 mm</p>
	
NCCG-23M	<p data-bbox="572 1137 938 1160">GigE Area Scan Camera NCCG-23M</p> <p data-bbox="572 1189 663 1211">C-Mount</p> <p data-bbox="572 1211 1114 1234">1/1.2" CMOS sensor, progressive scan, monochrome</p> <p data-bbox="572 1234 884 1256">Resolution: 1920 x 1200 pixels</p> <p data-bbox="572 1256 868 1279">Pixel size: 5,86 μm x 5,86 μm</p> <p data-bbox="572 1279 810 1301">Frame rate: max. 51 fps</p> <p data-bbox="572 1301 1043 1323">GigE output: standard RJ45 female connector</p> <p data-bbox="572 1323 724 1346">Electrical data:</p> <ul data-bbox="572 1346 963 1402" style="list-style-type: none"> • extern: U: 24 V DC, I: 97 mA, P: 2,3 W • PoE: U: 48 V DC, I: 58 mA, P: 2,8 W <p data-bbox="572 1402 959 1424">Dimensions: 29 mm x 29 mm x 56 mm</p>
	
NCCG-23C	<p data-bbox="572 1541 938 1563">GigE Area Scan Camera NCCG-23C</p> <p data-bbox="572 1592 663 1615">C-Mount</p> <p data-bbox="572 1615 1034 1637">1/1.2" CMOS sensor, progressive scan, color</p> <p data-bbox="572 1637 884 1659">Resolution: 1920 x 1200 pixels</p> <p data-bbox="572 1659 868 1682">Pixel size: 5,86 μm x 5,86 μm</p> <p data-bbox="572 1682 810 1704">Frame rate: max. 51 fps</p> <p data-bbox="572 1704 1043 1727">GigE output: standard RJ45 female connector</p> <p data-bbox="572 1727 724 1749">Electrical data:</p> <ul data-bbox="572 1749 963 1805" style="list-style-type: none"> • extern: U: 24 V DC, I: 97 mA, P: 2,3 W • PoE: U: 48 V DC, I: 58 mA, P: 2,8 W <p data-bbox="572 1805 959 1827">Dimensions: 29 mm x 29 mm x 56 mm</p>
	

Item No.	Description
NCCG-32M	<p data-bbox="571 344 938 367">GigE Area Scan Camera NCCG-32M</p> <p data-bbox="571 394 663 416">C-Mount</p> <p data-bbox="571 418 1114 441">1/1.8" CMOS sensor, progressive scan, monochrome</p> <p data-bbox="571 443 884 465">Resolution: 2048 x 1536 pixels</p> <p data-bbox="571 468 868 490">Pixel size: 3,45 µm x 3,45 µm</p> <p data-bbox="571 492 813 515">Frame rate: max. 39 fps</p> <p data-bbox="571 517 1043 539">GigE output: standard RJ45 female connector</p> <p data-bbox="571 542 727 564">Electrical data:</p> <ul data-bbox="571 566 979 613" style="list-style-type: none"> • extern: U: 24 V DC, I: 107 mA, P: 2,6 W • PoE: U: 48 V DC, I: 64 mA, P: 3,1 W <p data-bbox="571 616 960 638">Dimensions: 29 mm x 29 mm x 56 mm</p>
	
NCCG-32C	<p data-bbox="571 748 938 770">GigE Area Scan Camera NCCG-32C</p> <p data-bbox="571 797 663 819">C-Mount</p> <p data-bbox="571 822 1034 844">1/1.8" CMOS sensor, progressive scan, color</p> <p data-bbox="571 846 884 869">Resolution: 2048 x 1536 pixels</p> <p data-bbox="571 871 868 893">Pixel size: 3,45 µm x 3,45 µm</p> <p data-bbox="571 896 813 918">Frame rate: max. 39 fps</p> <p data-bbox="571 920 1043 943">GigE output: standard RJ45 female connector</p> <p data-bbox="571 945 727 967">Electrical data:</p> <ul data-bbox="571 969 979 1016" style="list-style-type: none"> • extern: U: 24 V DC, I: 107 mA, P: 2,6 W • PoE: U: 48 V DC, I: 64 mA, P: 3,1 W <p data-bbox="571 1019 960 1041">Dimensions: 29 mm x 29 mm x 56 mm</p>
	
NCCG-51M	<p data-bbox="571 1151 938 1173">GigE Area Scan Camera NCCG-51M</p> <p data-bbox="571 1200 663 1223">C-Mount</p> <p data-bbox="571 1225 1098 1247">2/3" CMOS sensor, progressive scan, monochrome</p> <p data-bbox="571 1249 884 1272">Resolution: 2448 x 2048 pixels</p> <p data-bbox="571 1274 868 1296">Pixel size: 3,45 µm x 3,45 µm</p> <p data-bbox="571 1299 813 1321">Frame rate: max. 23 fps</p> <p data-bbox="571 1323 1043 1346">GigE output: standard RJ45 female connector</p> <p data-bbox="571 1348 727 1370">Electrical data:</p> <ul data-bbox="571 1373 979 1420" style="list-style-type: none"> • extern: U: 24 V DC, I: 109 mA, P: 2,6 W • PoE: U: 48 V DC, I: 65 mA, P: 3,1 W <p data-bbox="571 1422 960 1444">Dimensions: 29 mm x 29 mm x 56 mm</p>
	
NCCG-51C	<p data-bbox="571 1554 938 1576">GigE Area Scan Camera NCCG-51C</p> <p data-bbox="571 1603 663 1626">C-Mount</p> <p data-bbox="571 1628 1018 1650">2/3" CMOS sensor, progressive scan, color</p> <p data-bbox="571 1653 884 1675">Resolution: 2448 x 2048 pixels</p> <p data-bbox="571 1677 868 1700">Pixel size: 3,45 µm x 3,45 µm</p> <p data-bbox="571 1702 813 1724">Frame rate: max. 23 fps</p> <p data-bbox="571 1727 1043 1749">GigE output: standard RJ45 female connector</p> <p data-bbox="571 1751 727 1774">Electrical data:</p> <ul data-bbox="571 1776 979 1823" style="list-style-type: none"> • extern: U: 24 V DC, I: 109 mA, P: 2,6 W • PoE: U: 48 V DC, I: 65 mA, P: 3,1 W <p data-bbox="571 1825 960 1848">Dimensions: 29 mm x 29 mm x 56 mm</p>
	

Item No.	Description
NCCG-53M	<p data-bbox="571 344 938 367">GigE Area Scan Camera NCCG-53M</p> <p data-bbox="571 394 663 416">C-Mount</p> <p data-bbox="571 418 1082 441">1" CMOS sensor, progressive scan, monochrome</p> <p data-bbox="571 443 887 465">Resolution: 2592 × 2048 pixels</p> <p data-bbox="571 468 845 490">Pixel size: 4.8 μm x 4.8 μm</p> <p data-bbox="571 492 813 515">Frame rate: max. 23 fps</p> <p data-bbox="571 517 1043 539">GigE output: standard RJ45 female connector</p> <p data-bbox="571 542 727 564">Electrical data:</p> <ul data-bbox="571 566 995 613" style="list-style-type: none"> • external: U: 24 V DC, I: 282 mA, P: 6.8 W • PoE: U: 48 V DC, I: 87 mA, P: 4.2 W <p data-bbox="571 616 960 638">Dimensions: 29 mm x 29 mm x 56 mm</p>
	
NCCG-53c	<p data-bbox="571 725 938 748">GigE Area Scan Camera NCCG-53C</p> <p data-bbox="571 775 663 797">C-Mount</p> <p data-bbox="571 799 999 822">1" CMOS sensor, progressive scan, color</p> <p data-bbox="571 824 887 846">Resolution: 2592 × 2048 pixels</p> <p data-bbox="571 848 845 871">Pixel size: 4.8 μm x 4.8 μm</p> <p data-bbox="571 873 813 896">Frame rate: max. 23 fps</p> <p data-bbox="571 898 1043 920">GigE output: standard RJ45 female connector</p> <p data-bbox="571 922 727 945">Electrical data:</p> <ul data-bbox="571 947 995 994" style="list-style-type: none"> • external: U: 24 V DC, I: 282 mA, P: 6.8 W • PoE: U: 48 V DC, I: 87 mA, P: 4.2 W <p data-bbox="571 996 960 1019">Dimensions: 29 mm x 29 mm x 56 mm</p>
	
NCCG-124M	<p data-bbox="571 1106 951 1128">GigE Area Scan Camera NCCG-124M</p> <p data-bbox="571 1155 663 1178">C-Mount</p> <p data-bbox="571 1180 1098 1202">1.1" CMOS sensor, progressive scan, monochrome</p> <p data-bbox="571 1205 887 1227">Resolution: 4096 × 3000 pixels</p> <p data-bbox="571 1229 868 1252">Pixel size: 3,45 μm x 3,45 μm</p> <p data-bbox="571 1254 813 1276">Frame rate: max. 10 fps</p> <p data-bbox="571 1279 1043 1301">GigE output: standard RJ45 female connector</p> <p data-bbox="571 1303 727 1326">Electrical data:</p> <ul data-bbox="571 1328 979 1375" style="list-style-type: none"> • extern: U: 24 V DC, I: 120 mA, P: 2,9 W • PoE: U: 48 V DC, I: 73 mA, P: 3,5 W <p data-bbox="571 1377 960 1400">Dimensions: 29 mm x 29 mm x 56 mm</p>
	
NCCG-124C	<p data-bbox="571 1487 951 1509">GigE Area Scan Camera NCCG-124C</p> <p data-bbox="571 1536 663 1559">C-Mount</p> <p data-bbox="571 1561 1015 1583">1.1" CMOS sensor, progressive scan, color</p> <p data-bbox="571 1585 887 1608">Resolution: 4096 × 3000 pixels</p> <p data-bbox="571 1610 868 1632">Pixel size: 3,45 μm x 3,45 μm</p> <p data-bbox="571 1635 813 1657">Frame rate: max. 10 fps</p> <p data-bbox="571 1659 1043 1682">GigE output: standard RJ45 female connector</p> <p data-bbox="571 1684 727 1706">Electrical data:</p> <ul data-bbox="571 1709 979 1756" style="list-style-type: none"> • extern: U: 24 V DC, I: 120 mA, P: 2,9 W • PoE: U: 48 V DC, I: 73 mA, P: 3,5 W <p data-bbox="571 1758 960 1780">Dimensions: 29 mm x 29 mm x 56 mm</p>
	

Item No.	Description
NCLG-120M	<p data-bbox="571 376 948 407">GigE Area Scan Camera NCLG-120M</p> <p data-bbox="571 427 1123 698"> M58-Mount (C-, F-, M42-Mount via adapter) APS-C CMOS sensor, progressive scan, monochrome Resolution: 4096 x 3072 pixels Pixel size: 5.5 µm x 5.5 µm Frame rate: max. 19 fps GigE output: 2x standard RJ45 female connector Dual Gigabit Ethernet (Static Link Aggregation) Electrical data: <ul style="list-style-type: none"> • external: U: 24 V DC, I: 255 mA, P: 6.1 W • PoE: U: 48 V DC, I: 154 mA, P: 7.4 W Dimensions: 60 mm x 60 mm x 52,4 mm </p>
NCLG-120C	<p data-bbox="571 813 948 844">GigE Area Scan Camera NCLG-120C</p> <p data-bbox="571 864 1072 1135"> M58-Mount (C-, F-, M42-Mount via adapter) APS-C CMOS sensor, progressive scan, color Resolution: 4096 x 3072 pixels Pixel size: 5.5 µm x 5.5 µm Frame rate: max. 19 fps GigE output: 2x standard RJ45 female connector Dual Gigabit Ethernet (Static Link Aggregation) Electrical data: <ul style="list-style-type: none"> • external: U: 24 V DC, I: 255 mA, P: 6.1 W • PoE: U: 48 V DC, I: 154 mA, P: 7.4 W Dimensions: 60 mm x 60 mm x 52,4 mm </p>
NCLG-200M	<p data-bbox="571 1249 948 1281">GigE Area Scan Camera NCLG-200M</p> <p data-bbox="571 1301 1123 1572"> M58-Mount (C-, F-, M42-Mount via adapter) 35 mm CMOS sensor, progressive scan, monochrome Resolution: 5120 x 3840 pixels Pixel size: 6.4 µm x 6.4 µm Frame rate: max. 12 fps GigE output: 2x standard RJ45 female connector Dual Gigabit Ethernet (Static Link Aggregation) Electrical data: <ul style="list-style-type: none"> • external: U: 24 V DC, I: 247 mA, P: 5.9 W • PoE: U: 48 V DC, I: 150 mA, P: 7.2 W Dimensions: 60 mm x 60 mm x 52,4 mm </p>
NCLG-200C	<p data-bbox="571 1686 948 1718">GigE Area Scan Camera NCLG-200C</p> <p data-bbox="571 1738 1072 2009"> M58-Mount (C-, F-, M42-Mount via adapter) 35 mm CMOS sensor, progressive scan, color Resolution: 5120 x 3840 pixels Pixel size: 6.4 µm x 6.4 µm Frame rate: max. 12 fps GigE output: 2x standard RJ45 female connector Dual Gigabit Ethernet (Static Link Aggregation) Electrical data: <ul style="list-style-type: none"> • external: U: 24 V DC, I: 247 mA, P: 5.9 W • PoE: U: 48 V DC, I: 150 mA, P: 7.2 W Dimensions: 60 mm x 60 mm x 52,4 mm </p>

Item No.	Description
----------	-------------

Line-Scan Cameras

DAL-S2-2k40



Monochrome line-scan camera Spyder2 CameraLink

M42x1 mount
2048 pixel CCD sensor
14µm x 14µm pixel area
18 kHz line scan rate
Pixel Clock 1 x 40 MHz
Digital output 8/10 Bit CameraLink Standard Base
Power requirements: 12V DC / 5 W
Dimensions: 50 x 85 x 50mm³ (excl. lens adapter)
F-mount adapter is contained in the scope of supply

DAL-LIN-2k80



Monochrome line-scan camera LINEA CameraLink

mount M42x1 (optional C-mount adapter)
CMOS-Sensor 2048 pixel
7,04µm x 7,04µm Pixel size
Sensor size 14,4 mm
line scan rate 80 kHz
Pixel Clock 77 MHz
Power requirements: 12 bis 24 VDC, 4 W
Connector: 2xSDR26, 6-Pol Hirose (Mini-CL)
Digital output 8 or 12 Bit via CameraLink Standard
Dimensions 62 x 62 x 31 (B x H x T in mm)

DAL-P4-2k10D



Monochrome line-scan camera Piranha4 CameraLink

M42x1 mount
2048 pixel CMOS sensor
10,56µm x 10,56µm pixel area
100 kHz line scan rate
Pixel Clock 2 x 85 MHz
Digital output 8, 10 or 12 Bit
Base, Medium, Full CameraLink configuration possible
Power requirements: 12 - 24 VDC, 8,3 W
Dimensions: 62 x 62 x 48mm³

Item No.	Description
----------	-------------

Light Sources

CC-FL027x027/W-V02



Area light LED 27 x 27 mm

Lighted area: 27 x 27 mm²
 Light source: LED white (6600 K)
 Power requirements: 24 VDC / 2,9 W
 Dimension: 29 x 39 x 15 mm³

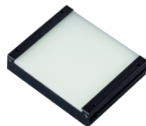
CC-FL043x035/W-V02



Area light LED 43 x 35 mm

Lighted area: 43 x 35 mm²
 Light source: LED white (6600 K)
 Power requirements: 24 VDC / 4,8 W
 Dimension: 45 x 47 x 15 mm³

CC-FL051x051/W-V02



Area light LED 51 x 51 mm

Lighted area: 51 x 51 mm²
 Light source: LED white (6600 K)
 Power requirements: 24 VDC / 8,2 W
 Dimension: 53 x 63 x 15 mm³

PLA-0021-M8



Area light LED 100 x 100 mm

Lighted area: 100 x 100 mm²
 Light source: LED white
 Power requirements: 24 VDC
 Dimension: 140mm x 135mm x 20mm

PLA-0030/W



Area light LED 300 x 200 mm

Lighted area: 300 x 200 mm²
 Light source: LED white
 Power requirements: 24 VDC / 19,2 W
 Dimension: 250mm x 340mm x 20mmDC

CC-BL041x016/W-V02



High-Power LED-Light

Lighted area: 41 x 16 mm²
 Light source: LED white
 Power requirements: 24 VDC / 3,8 W
 Dimension: 53 x 20 x 20 mm³

Item No.	Description
CC-BL080x016/W-V02	<p data-bbox="549 344 782 367">High-Power LED-Light</p> <p data-bbox="549 398 925 492">Lighted area: 80 x 16 mm² Light source: LED white Power requirements: 24 VDC / 7,6 W Dimension: 92 x 20 x 20 mm³</p>
CC-BL074x030/W-V02	<p data-bbox="549 591 782 613">High-Power LED-Light</p> <p data-bbox="549 645 925 739">Lighted area: 74 x 30 mm² Light source: LED white Power requirements: 24 VDC / 12 W Dimension: 86 x 34 x 20 mm³</p>
TIS-0011/R-24V	<p data-bbox="549 882 836 904">Diffuse ring light LED D 130</p> <p data-bbox="549 927 861 1025">External dimensions: 125 mm Light color: red Depth: 12mm 24 VDC</p>
TIS-0012/R-24V	<p data-bbox="549 1106 836 1128">Diffuse ring light LED D 100</p> <p data-bbox="549 1151 861 1249">External dimensions: 102 mm Light color: red Depth: 12mm 24 VDC</p>
TIS-0021/R-24V	<p data-bbox="549 1330 756 1352">Ring light LED D 50</p> <p data-bbox="549 1375 845 1473">External dimensions: 50 mm Light color: red Depth: 16mm 24 VDC</p>
TIS-0022/R-24V	<p data-bbox="549 1576 756 1599">Ring light LED D 70</p> <p data-bbox="549 1621 845 1720">External dimensions: 70 mm Light color: red Depth: 22mm 24 VDC</p>

Item No.	Description
----------	-------------

Gigabit-Ethernet Boards

NET-0010

GigE-board with 1 Port for PCI-Express x1



NET-0002

GigE-board with 2 Ports for PCI-Express x4



NET-0004

GigE-board with 4 Ports for PCI-Express x4



NET-0022/V02

GigE-Board with 2 Ports for PCI-Express x4
with PoE (Power over Ethernet)



NET-0024/V02

GigE-Board with 4 Ports for PCI-Express x4
with PoE (Power over Ethernet)



Item No.	Description
----------	-------------

Lenses



RIC-OBJ-9M1220	12 Megapixel lens 12 mm lockable C mount , 1,1" , f = 12 mm , F 2,0
RIC-OBJ-9M1618	12 Megapixel lens 16 mm lockable C mount , 1,1" , f = 16 mm , F 1,8
RIC-OBJ-9M2518	12 Megapixel lens 25 mm lockable C mount , 1,1" , f = 25 mm , F 1,8
RIC-OBJ-9M3518	12 Megapixel lens 35 mm lockable C mount , 1,1" , f = 35 mm , F 1,8
RIC-OBJ-9M5024	12 Megapixel lens 50 mm lockable C mount , 1,1" , f = 50 mm , F 2,4
RIC-OBJ-9M7528	12 Megapixel lens 75 mm lockable C mount , 1,1" , f = 75 mm , F 2,8

Item No.	Description
FUJ-0001/V02	Compact lens 6 mm lockable C mount , 1/2" , f = 6 mm , F 1,2
FUJ-0002/V02	Compact lens 9 mm lockable C mount , 2/3" , f = 9 mm , F 1,4
FUJ-0003/V02	Compact lens 12,5 mm lockable C mount , 2/3" , f = 12,5 mm , F 1,4
FUJ-0004/V02	Compact lens 16 mm lockable C mount , 2/3" , f = 16 mm , F 1,4
FUJ-0005/V02	Compact lens 25 mm lockable C mount , 2/3" , f = 25 mm , F 1,4
FUJ-0006/V02	Compact lens 35 mm lockable C mount , 2/3" , f = 35 mm , F 1,6
FUJ-0007/V02	Compact lens 50 mm lockable C mount , 2/3" , f = 50 mm , F 2,3
FUJ-0008/V02	Compact lens 75 mm lockable C mount , 2/3" , f = 75 mm , F 2,8

Item No.	Description
----------	-------------

Communication

HIL-0003/2.2



PROFibus slave board, DS50-DPS-PCI

PROFibus DP slave
based on SPC3 ASIC,
max. data rate 12Mbaud, 368 byte process map ,
RS232C diagnostic link

HIL-0006



PROFibus slave board, CIFX 50-DP
PROFibus DP slave
for PCI

HIL-0008



PROFibus slave board, CIFX 50E-DP

PROFibus DP slave
for PCI Express

HIL-0206



Real-Time-Ethernet board, CIFX 50-RE

PCI Communication Interface netX
for Real-Time-Ethernet - 2x RJ45
for PCI

Only for NeuroCheck 6.0/6.1!

HIL-0208



Real-Time-Ethernet board, CIFX 50E-RE

PCI Communication Interface netX
for Real-Time-Ethernet - 2x RJ45
for PCI Express

Only for NeuroCheck 6.0/6.1!

Item No.	Description
----------	-------------

ICP-0001/V02



Digital-I/O board PCI-P16POR16U

PCI-board with 16 digital input channels and 16 digital output channels, opto-decoupled, 2 x 37-pin D-sub connectors on two slot covers. Special feature: with 1 x 37-pin D-sub connector 8 input and 8 outputs channels are available.

ICP-0002

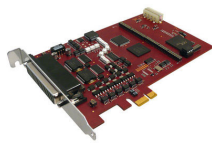


Digital-I/O board PEX-P16POR16i (PCI-Express)

PCI-Express board with 16 digital input channels and 16 digital output channels, opto-decoupled, 2 x 37-pin D-sub connectors on two slot covers. Special feature: with 1 x 37-pin D-sub connector 8 input and 8 outputs channels are available.

Please note - pin assignment is not compatible with ICP-0001!

ME-0101

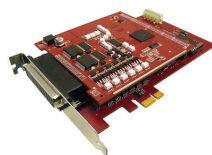


Digital I/O board 16/16 PCI-Express

PCI-Express bus board with 16 digital input channels and 16 digital output channels, opto-decoupled 78-pin D-sub connector.

Only for NeuroCheck 6.0/6.1 usable!

ME-0102



Digital I/O board 32/32 PCI-Express

PCI-Express bus board with 32 digital input channels and 32 digital output channels, opto-decoupled 78-pin D-sub connector.

Only for NeuroCheck 6.0/6.1 usable!

Item No.	Description
----------	-------------

Cables



NWK-0005	GigE- Cable Cat.7, Length 5m
NWK-0010	GigE- Cable Cat.7, Length 10m
NWK-0020	GigE- Cable Cat.7, Length 20m
NWK-0105	GigE- Cable, dragchain resistant screw lock on one side Length 5m
NWK-0110	GigE- Cable, dragchain resistant screw lock on one side Length 10m
NWK-0120	GigE- Cable, dragchain resistant screw lock on one side Length 20m
KAB-M12-RJ45_NCG/05	Gigabit Ethernet cable RJ45 to M12 for NCG IP-Series IP67 protected length 5m
KAB-M12-RJ45_NCG/10	Gigabit Ethernet cable RJ45 to M12 for NCG IP-Series IP67 protected length 10m
KAB-M12-RJ45_NCG/15	Gigabit Ethernet cable RJ45 to M12 for NCG IP-Series IP67 protected length 15m
KAB-M12-RJ45_NCG/20	Gigabit Ethernet cable RJ45 to M12 for NCG IP-Series IP67 protected length 20m
KAB-CL2xMini/05	CameraLink-Cable Mini CL / Mini CL-plug (male) Length 5m

Item No.	Description
KAB-CL2xMini/10	CameraLink-Cable Mini CL / Mini CL-plug (male) Length 10m
KAB-CLMini/05	CameraLink-Cable MDR26 / Mini CL-plug (male) Länge 5m
KAB-CLMini/10	CameraLink-Cable MDR26 / Mini CL-plug (male) Länge 10m