



Plug-Ins, nonstandard modules
and extra licenses
for NeuroCheck 6.1

Content

On the following pages you will find a list of plug-ins, special data format converters, special hardware drivers and further nonstandard modules and extra licenses to extend the standard software product NeuroCheck version 6.1.

State of this document: March 14, 2017

Subject to errors and technical modifications.

Please contact for more information:

Sales: sales@neurocheck.com

Technical: support@neurocheck.com

NeuroCheck GmbH

Neckarstr. 76/1

D-71686 Remseck, Germany

Tel: +49 (0) 7146 / 8956-0

Fax: +49 (0) 7146 / 8956-29

E-mail: info@neurocheck.com

Web: www.neurocheck.com

Table of contents

Plug-in extensions (products)	4
Plug-in extensions (extra licensing)	6
Driver extensions (extra licensing)	7
Data format converter extensions (extra licensing)	8
Multi license levels	9
Free tools	10

Name	Description
------	-------------

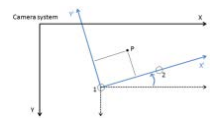
Plug-in extensions (products)

Please note:

- Plug-in software extensions listed in this section may be used several times in different projects.
- Please note that for creation of a check routine containing plug-in check functions a NeuroCheck 6.1 Premium Edition is required.

PI_CoordinateTransformation.NET.dll

This NeuroCheck 6.1 plug-in allows to perform a two-dimensional coordinate transformation for the center points of objects found in the current image. For details please refer to help file PI_CoordinateTransformation.NET.chm.



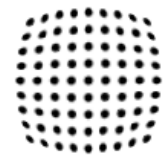
PI_DataRegister.NET.dll

This NeuroCheck 6.1 plug-in contains different plug-in check functions for modification or special use cases of data register cells. For details please refer to help file PI_DataRegister.NET.chm.



PI_Distortion.NET.dll

This NeuroCheck 6.1 plug-in contains functions to determine the geometric distortion in an image and minimizes the distortion like radial lens distortion or perspective by transforming the image. For details please refer to help file PI_Distortion.NET.chm.



PI_FileManagement.NET.dll

This NeuroCheck 6.1 plug-in contains functions to manage files on hard disc and network storages, for instance copy, move, zip and delete operations. For details please refer to help file PI_FileManagement.NET.chm.



PI_Gauge.NET.dll

This NeuroCheck 6.1 plug-in is used to gauge a part of an object contour with a special calliper rule. For details please refer to help file PI_Gauge.NET.chm.



PI_ImageTools.NET.dll

This NeuroCheck 6.1 plug-in contains different plug-in check functions for creation or modification of images. For details please refer to help file PI_ImageTools.NET.chm.



PI_ManualInput.NET.dll

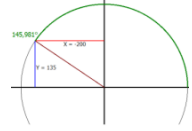
This NeuroCheck 6.1 plug-in contains plug-in check functions which allow a synchronous user input of data in automatic mode. For details please refer to help file PI_ManualInput.NET.chm.



Name	Description
------	-------------

PI_MeasTools.NET.dll

This NeuroCheck 6.1 plug-in contains different plug-in check functions for creation or modification of measurement lists. For details please refer to help file PI_MeasTools.NET.chm.



PI_RoiTools.NET.dll

This NeuroCheck 6.1 plug-in contains different plug-in check functions for creation or modification of list of ROIs. For details please refer to help file PI_RoiTools.NET.chm.



Name	Description
------	-------------

Plug-in extensions (extra licensing)

Please note:

- Plug-in software extensions listed in this section are licensed for single use on one computer only and therefore are bound to a specific NeuroCheck license.
- Please note that for creation of a check routine containing plug-in check functions a NeuroCheck 6.1 Premium Edition is required.

PI_CodeReader.NET.dll This NeuroCheck 6.1 plug-in is used to read several 2D codes and 1D bar codes using the external library MIL 10.0. For details please refer to help file PI_CodeReader.NET.chm.



PI_ContourMatch.NET.dll This NeuroCheck 6.1 plug-in contains a contour based search algorithm to find patterns (models) within an image using the external library MIL 10.0. For details please refer to help file PI_ContourMatch.NET.chm.



PI_HalconWrapper.NET.dll This NeuroCheck 6.1 plug-in is used to execute HDevelop programs for the external HALCON library. It is possible to use objects from the NeuroCheck data tray and register cells as input or output for the programs. For details please refer to help file PI_HalconWrapper.NET.chm.



PI_LensFocusControl.NET.dll This NeuroCheck 6.1 plug-in allows to change the focus value of a Optotune's electrically tunable lense dynamically. For details please refer to help file PI_LensFocusControl.NET.chm.



PI_SonyCameraControl.NET.dll This NeuroCheck 6.1 plug-in controls the Sony Pan/Tilt/Zoom video camera Sony EVI-H100S. The pan angle, tilt angle and zoom can be adjusted remotely from NeuroCheck. For image acquisition a special HD-SDI frame grabber is required. For details please refer to help file PI_SonyCameraControl.NET.chm.



Name	Description
------	-------------

Driver extensions (extra licensing)

Please note:

- Driver software extensions listed in this section are licensed for single use on one computer only and therefore are bound to a specific NeuroCheck license.
- Please note that for configuration of hardware drivers a NeuroCheck 6.1 Professional Edition is required.

Nc3D.NeuroCheck.Generic.dll This NeuroCheck 6.1 hardware driver integrates various 3D cameras of selected manufacturers as a 3D camera device in NeuroCheck software. For details please refer to help file Nc3D.NeuroCheck.Generic.chm.



Nc3D.NeuroCheck.EN.dll This NeuroCheck 6.1 hardware driver integrates selected models of the "N" series stereo 3D cameras of manufacturer Ensenso as a 3D camera device in NeuroCheck software. For details please refer to help file Nc3D.NeuroCheck.EN.chm.



NcFb.InterComm.NET.dll This NeuroCheck 6.1 driver offers the possibility of communication between multiple NeuroCheck instances on the same PC or over the network. This can be used for a master+slave system, handshaking with multiple instances or if the communication should work without extra hardware. For details please refer to help file NcFb.InterComm.NET.chm.



Name	Description
------	-------------

Data format converter extensions (extra licensing)

Please note:

- Data format converter software extensions listed in this section are licensed for single use on one computer only and therefore are bound to a specific NeuroCheck license.
- Please note that for configuration of data format converters a NeuroCheck 6.1 Professional Edition is required.

**NcFmtCnv.NeuroCheck.
CustomFile.NET.dll**

This NeuroCheck 6.1 Data Format Converter writes data into a readable text file (TXT, XML or HTML files for instance) in a custom file format. The file format is defined as template file using place holders. For details please refer to help file NcFmtCnv.NeuroCheck.CustomFile.NET.chm.



**NcFmtCnv.NeuroCheck.
DatabaseStandard.NET.dll**

This NeuroCheck 6.1 Data Format Converter is used to connect and exchange data from and to a local database using SQL statements. For details please refer to help file NcFmtCnv.NeuroCheck.DatabaseStandard.NET.chm.



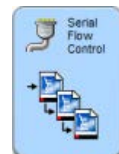
**NcFmtCnv.NeuroCheck.
FieldbusFlowControl.NET.dll**

This NeuroCheck 6.1 Data Format Converter contains a special sequence control system that allows starting a sequence of check routine executions including type changes by a single start signal from field bus. For details please refer to help file NcFmtCnv.NeuroCheck.FieldbusFlowControl.NET.chm.



**NcFmtCnv.NeuroCheck.
SerialFlowControl.NET.dll**

This NeuroCheck 6.1 Data Format Converter contains a special sequence control system that allows starting a sequence of check routine executions including type changes by a single start signal from a serial device (RS232, TCP/IP). For details please refer to help file NcFmtCnv.NeuroCheck.SerialFlowControl.NET.chm.



Name	Description
------	-------------

Multi license levels

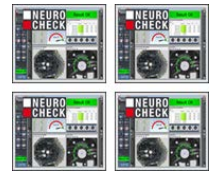
Please note:

- When using these software license levels, you can operate up to four parallel NeuroCheck software instances on one computer with each instance processing one NeuroCheck project. Thus you can run several, completely independent and non-synchronized image processing systems on a single computer.
- Software license levels listed in this section were introduced with NeuroCheck version 6.1.

Premium Multi

NeuroCheck V 6.1 Premium Multi Edition.
 Developer Edition for interactive development and parallel operation of up to four applications on one computer, including programming interface.
 The universal application software for industrial vision systems with an interactive environment for developing visual inspection systems for all areas of manufacturing and a runtime environment.

- Interactive check routine development.
- Integrated device manager for cameras and communication.
- Graphical tools for automatic mode screen design.
- Automatic shop-floor operation with process communication.
- Powerful and fast image processing algorithms.
- Programming interface to develop and integrate plug-in functions.
- Parallel operation of up to four independent applications on one computer.



Runtime Multi

NeuroCheck V 6.1 Runtime Multi Edition.
 Runtime Edition for up to four completely configured applications on one computer.
 The universal application software for industrial vision systems. The Runtime Edition comprises the entire image processing functionality of the Professional or Premium Edition excluding manual mode for configuration applications.

- Automatic shop-floor operation with process communication.
- Powerful and fast image processing algorithms.
- Parallel operation of up to four independent applications on one computer.



Name	Description
------	-------------

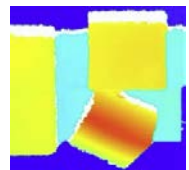
Free tools

Please note:

- Plug-in software extensions listed in this section may be used several times in different projects.
- Please note that for creation of a check routine containing plug-in check functions a NeuroCheck 6.1 Premium Edition is required.

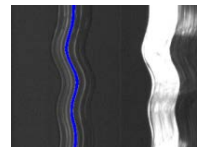
PI_Bit16ImageTools.NET.dll

This NeuroCheck 6.1 plug-in contains different plug-in check functions for managing 16-bit images and converting them to 8-bit images. The main use case of this plug-in is to evaluate gray scale coded height images provided by 3D cameras. For details please refer to help file PI_Bit16ImageTools.NET.chm.



PI_LineScan.NET.dll

This NeuroCheck 6.1 plug-in contains different plug-in check functions for processing line scan camera images. For details please refer to help file PI_LineScan.NET.chm.



PI_WindowMessage.NET.dll

This NeuroCheck 6.1 plug-in is able to send a message to the active window of a running application. The main use case of this check function is to update the NeuroCheck Protocol Viewer tool. For details please refer to help file PI_WindowMessage.NET.chm.

