

Serial Port

Driver



Copyright

Copyright © NeuroCheck GmbH
All rights reserved.
Version 6.2.3
Neckarstraße 76-1, 71686 Remseck, Germany

Phone: +49 (0) 7146 - 89 56-0
Fax: +49 (0) 7146 - 89 56-29
E-Mail: info@neurocheck.com
Web: www.neurocheck.com

Table of Contents

NeuroCheck Serial Port Driver Help	3
General Information	3
Introduction	3
Supported Hardware	4
Installation	5
Device Properties	6
Device Properties Dialog	6
Support Contact	7
Info Dialog	7
Support Services	9

Introduction

Communication via Serial Port

The NeuroCheck Serial Port driver offers the possibility of communication between NeuroCheck and the Remote control via a serial line connection. That enables the usage of a common serial port connection for communication with NeuroCheck.

Please note that it is necessary to integrate an appropriate Data Format Converter to NeuroCheck in order to communicate with a device of the Serial Port driver. The Data Format Converter defines the communication protocol between NeuroCheck and the remote station that is exchanged via serial line. So this driver is open to wide range of communication protocols.

Supported Hardware

The driver NcSc.SerialPort.UI.NET for NeuroCheck is based on the serial port interface of Microsoft© Windows© operating systems. Therefore any serial port that is supported by Microsoft© Windows© can be integrated into NeuroCheck with this driver.

Important Note:

A machine vision system consists of a variety of hardware and software components which must be well coordinated (PC system, BIOS, operating system and version, hardware drivers, camera, PCI boards, etc.). In general, [NeuroCheck GmbH](#) as producer of only one of these components cannot take responsibility for the complete system, i.e. we cannot guarantee that each possible combination of the above mentioned devices and components works properly. However, your NeuroCheck partner will be glad to help you selecting the right components for your machine vision application.

Installation

1. Please make sure that a serial port is installed in your computer.
2. Install NeuroCheck, if you have not done before, and make sure that you also have installed the NeuroCheck Serial Port Driver. The following files must be present in the NeuroCheck folder:

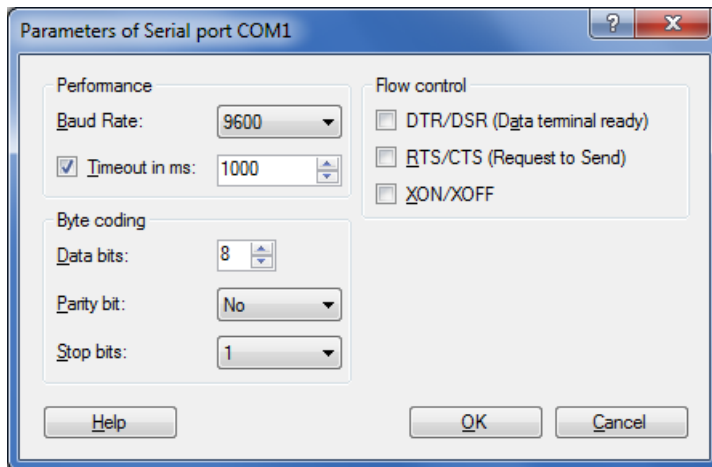
- NcSc.SerialPort.NET.dll
- NcSc.SerialPort.UI.NET.dll

If not, start again the installation routine for NeuroCheck or download and install the latest software update.

3. Configure the socket as new device in NeuroCheck:
 - a. In NeuroCheck, open the Device Manager (menu System | Device Manager)
 - b. Click "New..." to start the NeuroCheck Hardware Wizard.
 - c. Select option "Serial interface and Ethernet" on the first page and continue.
 - d. On the second page, select "NeuroCheck Serial Port Driver" and continue.
 - e. On the last page, select the serial port that you want to use and click "Finish" to close the NeuroCheck Hardware Wizard.
 - f. Select the new device node.
 - g. Choose "Properties" to open the dialog for the device settings and configure the settings for your application (see [Device Properties Dialog](#)).
 - h. Close the properties dialog with "OK".
4. Close the NeuroCheck Device Manager with OK and integrate an appropriate Data Format Converter for the Serial Port device to NeuroCheck.

Device Properties dialog

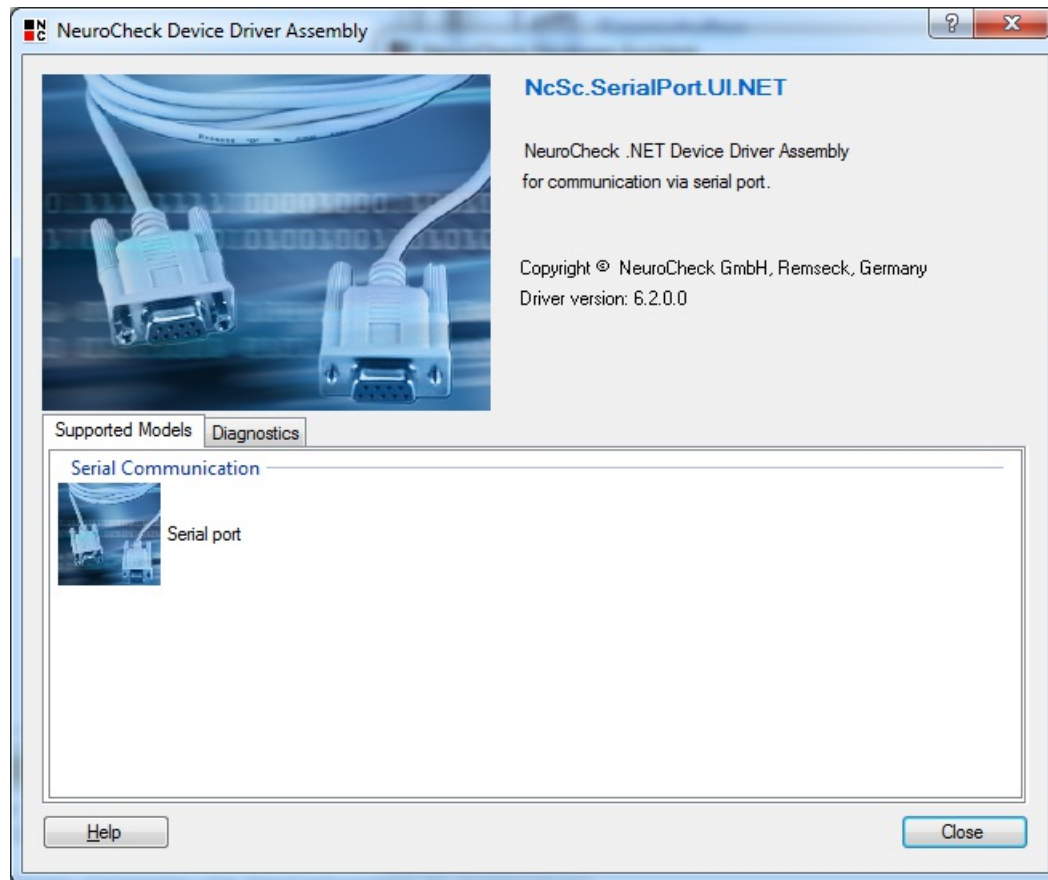
You can specify the properties of a Serial Port device.



Element	Description
Baud Rate	Specify here the transmission rate in bits per second.
Timeout	Specify here the timeout for sending a data to the remote station.
Data bits	Specify here the number of data in one character.
Parity bit	Specify here the mode the parity bit of a character is calculated with.
Stop bits	Specify here the number of stop bits to be sent together with each character.
DTR/DSR	Specify here whether to send Data Terminal Ready and Data Set Ready or not.
RTS/CTS	Specify here whether to send Request To Send and Clear To Send or not.
XON/XOFF	Specify here whether XON and XOFF are used to control flow or not.
Help	Click here to open this help file you are currently reading.

Info Dialog

☑ Screenshot of Info Dialog



This dialog displays information about the NeuroCheck driver DLL. You can select between two pages with specific information the dialog provides.

Element	Description
Help	Click here to open this help file you are currently reading.
Enable logging	Check the box to activate logging. Please note that the creation log messages can slow down the system. (On page Diagnostics only.)

Page Supported Models

This page provides information about the device types that are supported by this NeuroCheck driver DLL.

Page Diagnostics

This page provides a list of all the last events that occurred within the driver. The list is empty if the logging is disabled. If logging is enabled and the logging of NeuroCheck is enabled as well, all events are written to the NeuroCheck log file (NcLog.XML). Every entry in the list contains the priority, the date and time when it occurred and a description of the event.

Context menu element	Description
Copy to clipboard	Click here to copy the entire list of events to the clipboard. From the clipboard you can paste the list to a word processor, text editor or e-mail client.

Support Services

For technical support, please contact your local NeuroCheck partner or NeuroCheck GmbH:

Phone: +49 (0) 7146 - 89 56-40

E-Mail: support@neurocheck.com

Web: www.neurocheck.com

Before contacting us, please provide some important information about your system:

- **Information about your NeuroCheck installation and your PC setup:**

Use the NeuroCheck Diagnostics tool to check your installation and computer configuration.

The NeuroCheck Diagnostics is installed in the "Tools" folder within your NeuroCheck installation.

- **Log file information:**

Logging for the driver can be activated in the [Info Dialog](#) of the NeuroCheck driver DLL. It can be opened by clicking the info button when the Fieldbus or Real-Time Ethernet device is selected in the Device Manager of NeuroCheck. On page Diagnostics of the Info Dialog check the box Enable logging.

Please note that logging will be written to the NeuroCheck log file which must be activated, too. Logging for NeuroCheck is activated in the Software Settings on page Diagnostics.

Supported Models		Diagnostics
<input checked="" type="checkbox"/> Enable logging		
Priority	Time	Message
Debug Infor...	2010-03-17 - 09:06:24	Starting to execute 'ControlDriver'