

| | |
|-----------|--|
| Author: | NeuroCheck GmbH, E-Mail: support@neurocheck.com |
| Contents: | This whitepaper contains all necessary information for the management of NeuroCheck licenses registered on the dongle. |
| Notes: | <p>This document is not part of the official product documentation of the NeuroCheck software.</p> <p>NeuroCheck GmbH does not accept responsibility for the correctness, accuracy or completeness of the information provided in this document.</p> |

Table of contents:

| | | |
|-----------|--|-----------|
| 1. | Introduction | 2 |
| 2. | NeuroCheck version 5.1 | 3 |
| 2.1. | Create rtc file | 3 |
| 2.2. | Load rtu file | 4 |
| 3. | NeuroCheck version 6.0, 6.1 and 6.2..... | 6 |
| 3.1. | Create rtc file | 6 |
| 3.2. | Load rtu file | 7 |
| 4. | Diagnostics Tool (since NeuroCheck 6.1) | 8 |
| 4.1. | Create rtc file | 8 |
| 4.2. | Load rtu file | 9 |
| 5. | WibuKey Control Panel | 10 |
| 5.1. | Create wbc (rtc) file | 10 |
| 5.2. | Load rtu file | 11 |

1. Introduction

The NeuroCheck hardware dongle provides the licensing of the NeuroCheck software. To upgrade a hardware dongle to a higher license level (Runtime, Professional, Premium) or a new NeuroCheck version (5.1 to 6.X, 6.X to 6.Y) following steps must be followed:

- 1) Create the rtc file of the dongle
- 2) Transmit this file to the NeuroCheck GmbH
- 3) The NeuroCheck GmbH will create and provide a corresponding rtu file
- 4) Upgrade the license by loading the rtu file

Important notes:



While creating rtc files or loading rtu files, only ONE dongle may be connected to the computer. Otherwise the dongles might be programmed incorrectly.

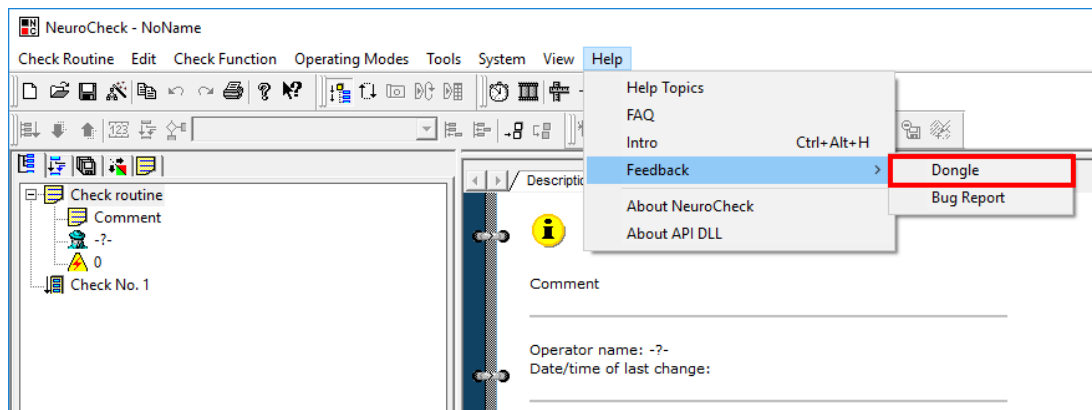


If you want to load rtu files from NeuroCheck diagnostic tool or from Wibukey Control Panel, please make sure to stop and CLOSE NeuroCheck software before doing so. Otherwise the software might behave improperly.

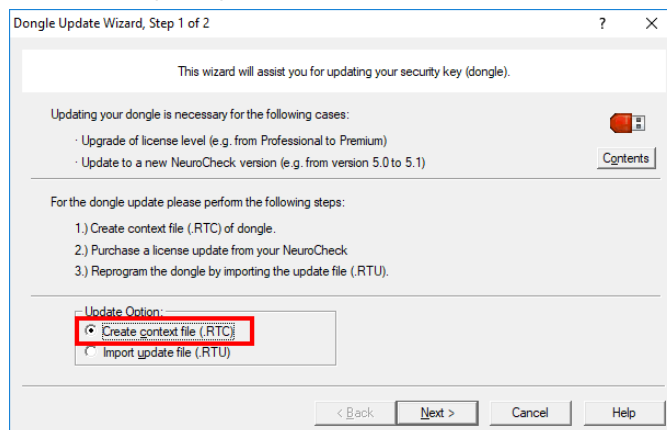
2. NeuroCheck version 5.1

2.1. Create rtc file

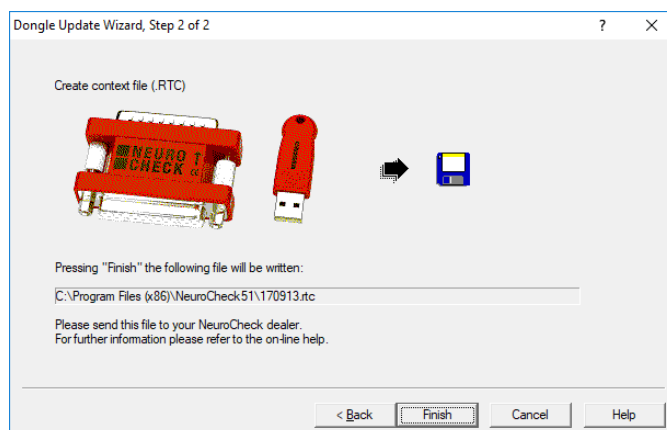
- 1) Open Dongle Update Wizard
 - a. Menu → Help → Feedback → Dongle



- 2) Select *Create context file (RTC)*

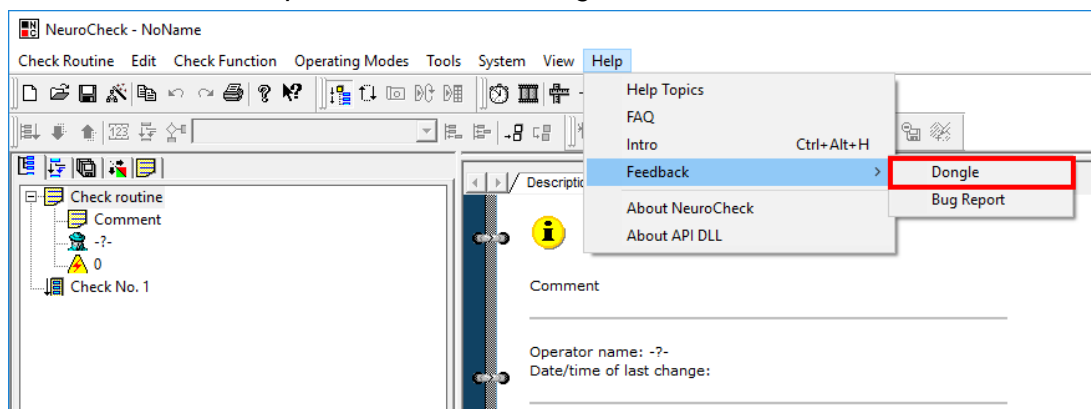


- 3) *Finish*

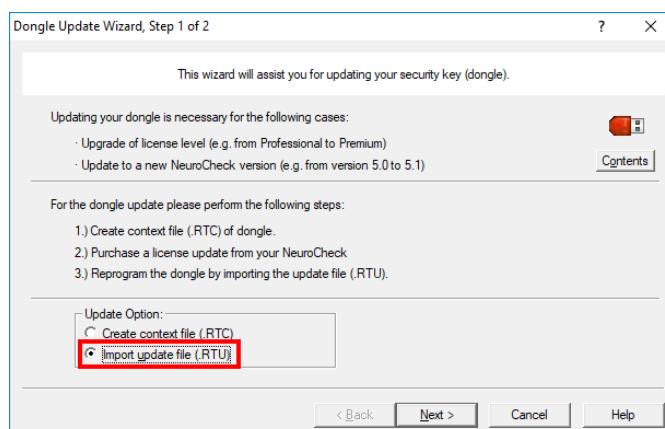


2.2. Load rtu file

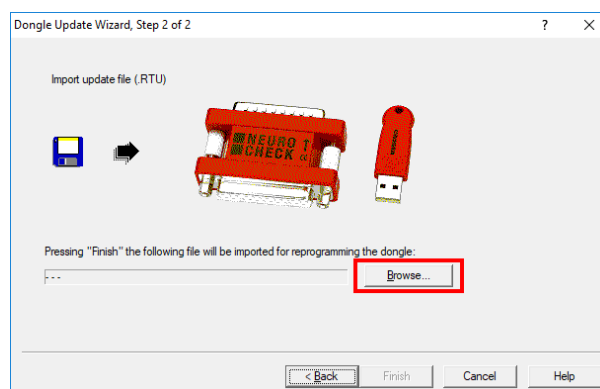
- 1) Open Dongle Update Wizard
 - a. Menu → Help → Feedback → Dongle



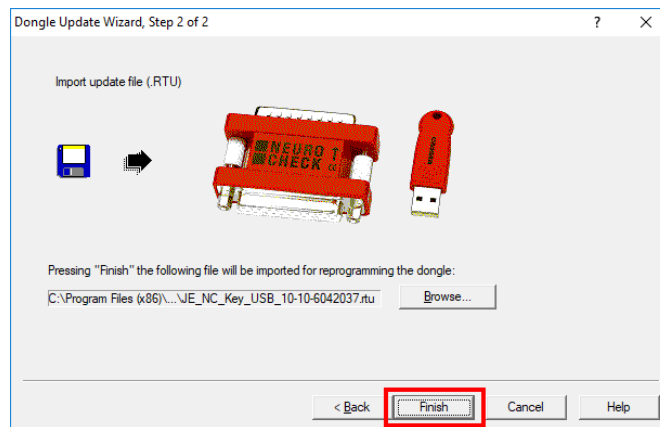
- 2) Select *Import update file (RTU)*



- 3) Select *Browse* and navigate to the rtu file



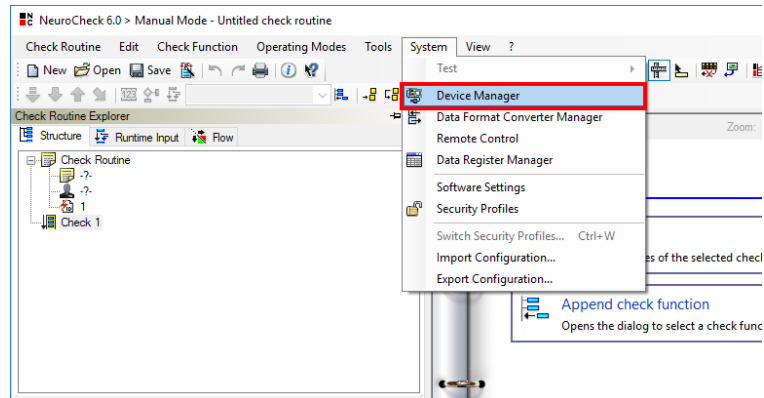
4) Select *Finish*



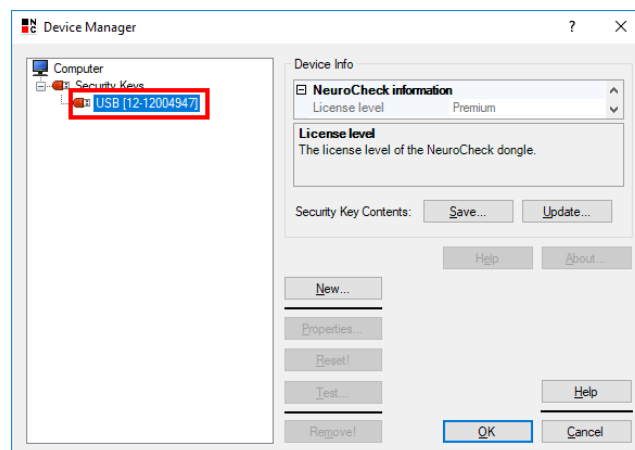
3. NeuroCheck version 6.0, 6.1 and 6.2

3.1. Create rtc file

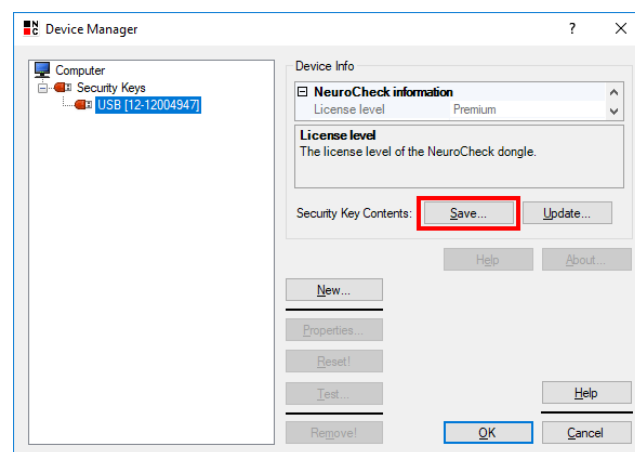
1) Open *Device Manager*



2) Select the dongle in the device tree view

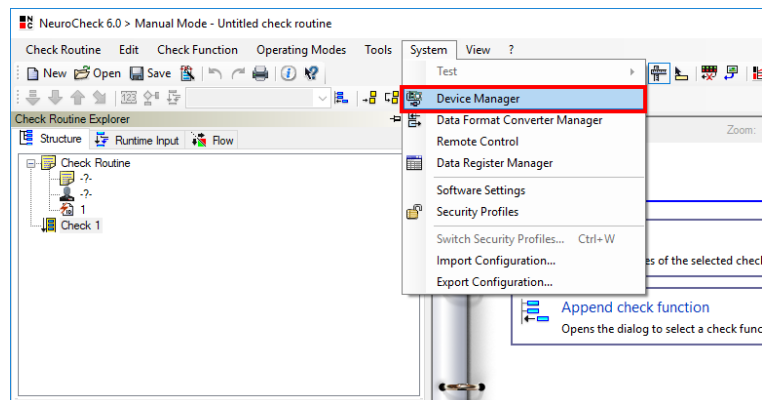


3) Select *Save*

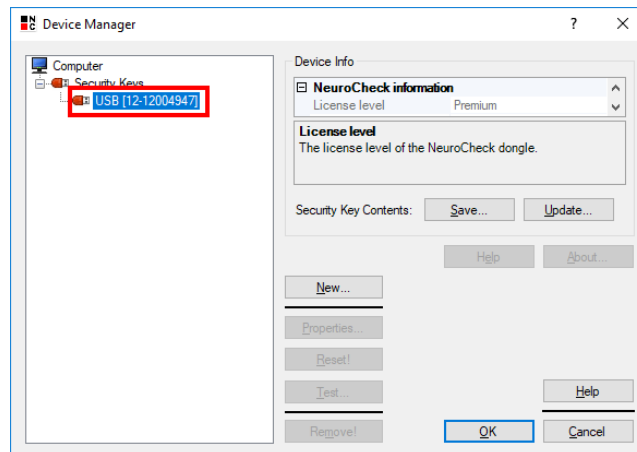


3.2. Load rtu file

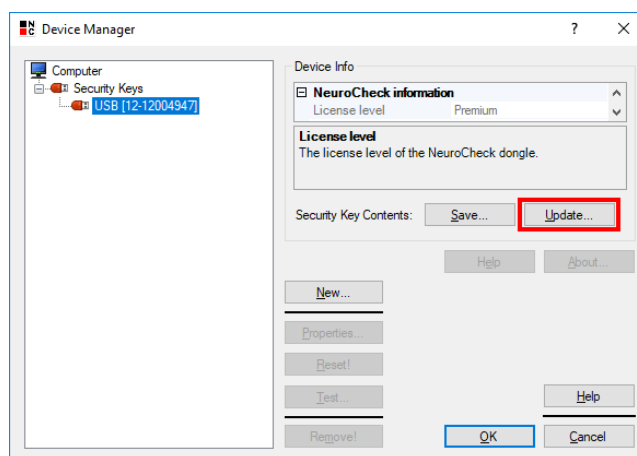
1) Open *Device Manager*



2) Select the dongle in the devices tree



3) Select *Update* and navigate to the location of the rtu file

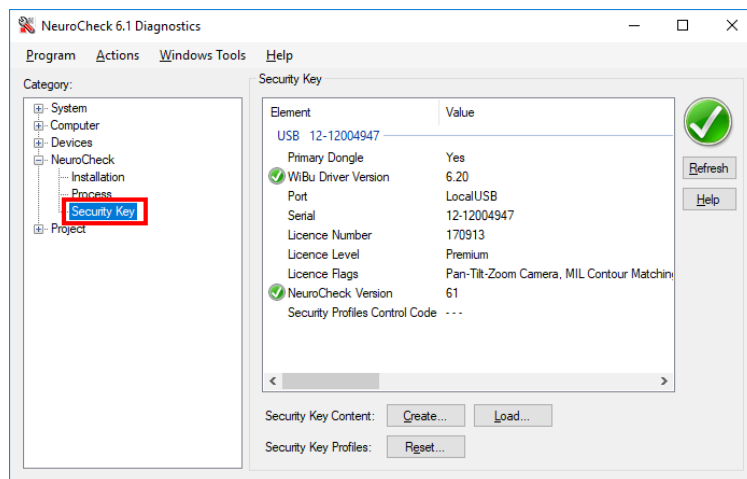


4. Diagnostics Tool (since NeuroCheck 6.1)

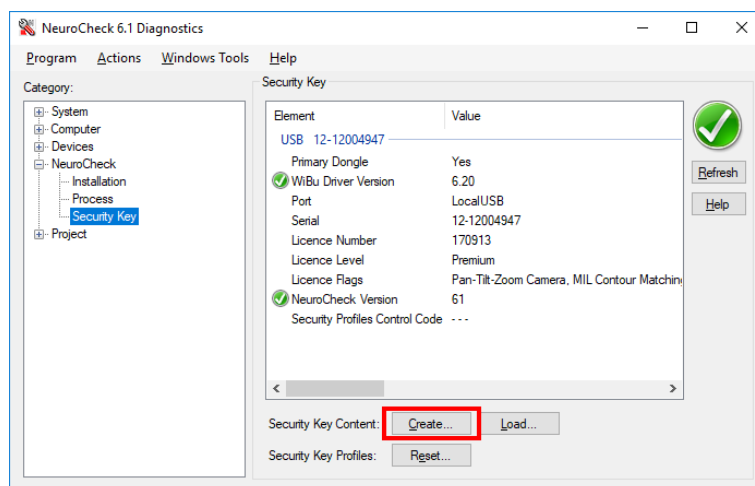
4.1. Create rtc file

- 1) Open Diagnostics Tool:
The Diagnostics Tool is installed together with NeuroCheck and is located in the installation directory at \Tools\Diagnostics\NcDiagnostics.exe

- 2) Navigate to *NeuroCheck > Security Key* in the tree view

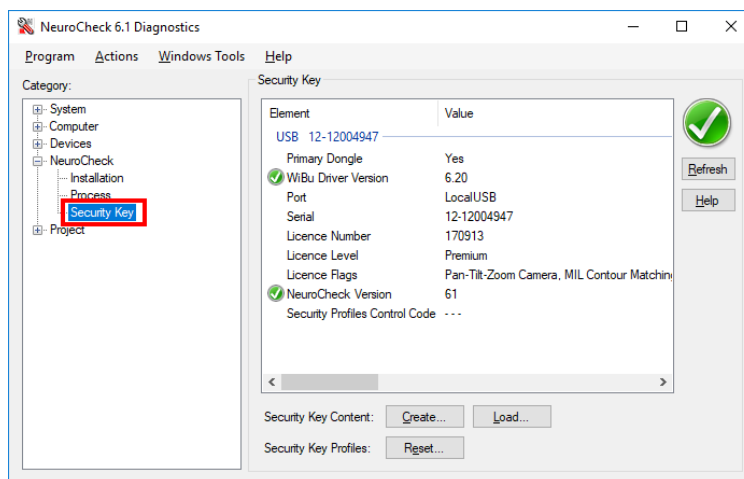


- 3) Select *Create*

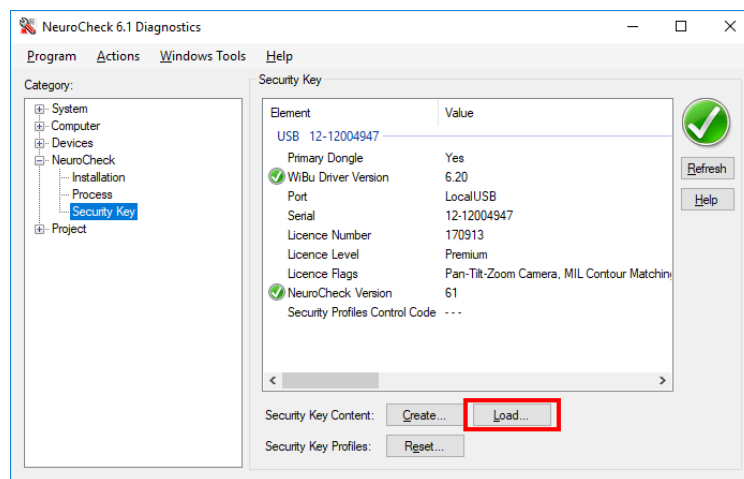


4.2. Load rtu file

- 1) Open Diagnostics Tool:
The Diagnostics Tool is installed together with NeuroCheck and is located in the installation directory at \Tools\Diagnostics\NcDiagnostics.exe
- 2) Navigate to *NeuroCheck > Security Key* in the tree view

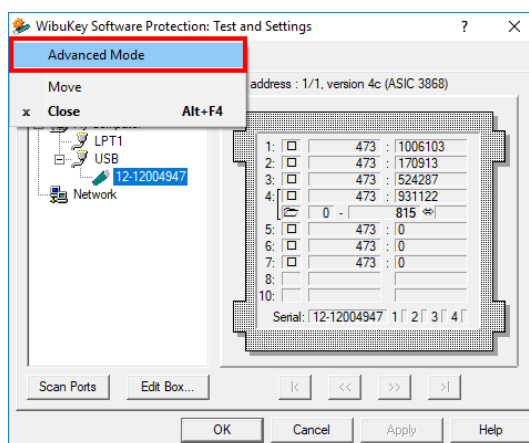


- 3) Select *Load* and navigate to the location of the rtu file



5. WibuKey Control Panel

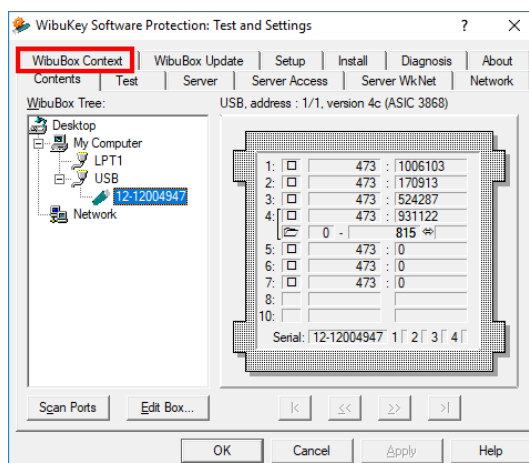
The WibuKey Control Panel application is installed together with WibuKey. To start it please open the Windows Control Panel. Change the view mode to *Small icons* and select the *WibuKey* entry. The application starts in standard mode. To create or load dongle files it needs to be switched into Advanced mode. Clicking on the WibuKey icon in the top left corner of the window opens a context menu from which the Advanced mode can be activated:



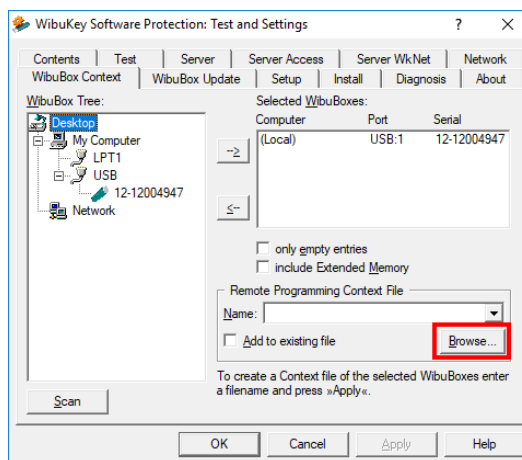
5.1. Create wbc (rtc) file

The context file created by the WibuKey Control Panel is of the type wbc (WibuKeyContext). This format differs technically from the rtc file format; yet both formats are compatible. NeuroCheck GmbH can also use a wbc file to create the rtu file needed for a license upgrade.

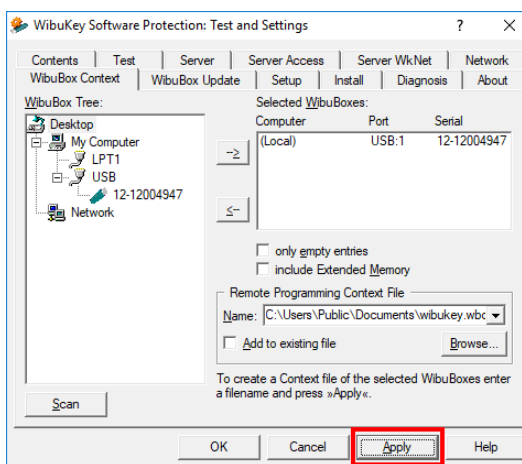
- 1) In Advanced mode select the tab *WibuBox Context*



2) Define the save location of the wbc file with *Browse*

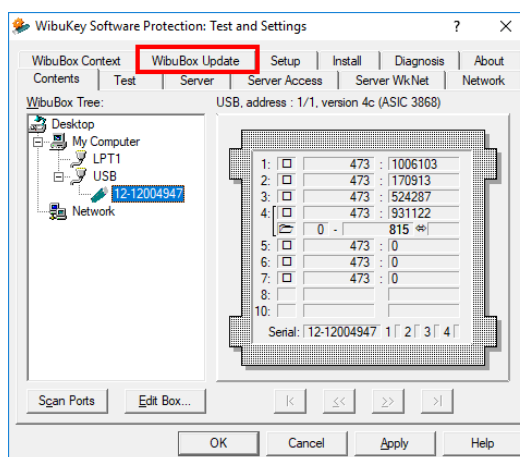


3) Write the file by selecting *Apply*

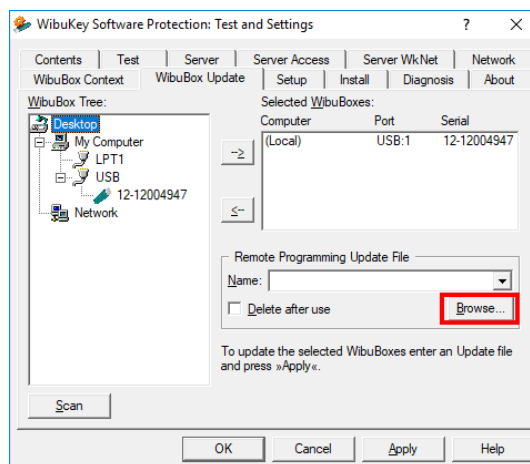


5.2. Load rtu file

1) In Advanced mode select the tab *WibuBox Update*



2) Specify the path of the rtu file with *Browse*



4) Load the file by selecting *Apply*

