

|                                  |              |
|----------------------------------|--------------|
| <b>Diagnostics Tool: Actions</b> | SE-JE-106-EN |
|----------------------------------|--------------|

Author: NeuroCheck GmbH, E-Mail: [support@neurocheck.com](mailto:support@neurocheck.com)

Content: This Whitepaper describes the NeuroCheck 6.1 Diagnostics Tool and its functions.

Note: This document is not content of the official product documentation of the Software NeuroCheck.

The NeuroCheck GmbH assumes no warranty for the correctness and completeness of the information in this document.

State: November 20, 2017

## 1. Introduction

The NeuroCheck Diagnostics tool is an application that can be opened separately from the NeuroCheck software. The Diagnostics tool can be used for the analysis of the complete system and is an essential tool for technical support. It is available since NeuroCheck software version 6.1.

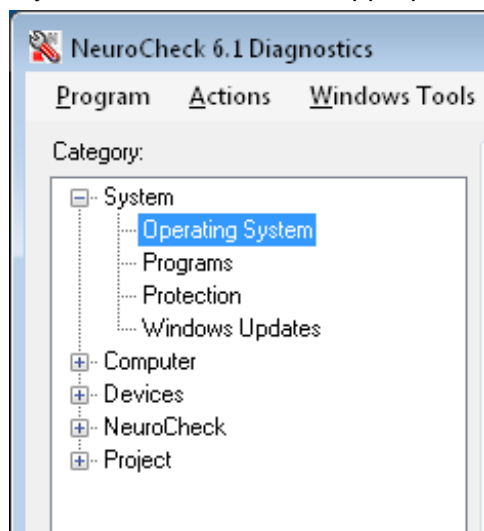
With the help of the Diagnostics tool, it is possible to display and save the following information:

- Software configuration of the computer
- Hardware configuration of the computer
- Connected devices
- NeuroCheck Installation
- NeuroCheck Project

The Diagnostics tool is installed with the NeuroCheck installation. It is located in the installation directory `C:\ProgramFiles\NeuroCheck61\` under `\Tools\Diagnostics\NcDiagnostics.exe`.

## 2. Categories

On the left side of the Diagnostics tool windows you will find several categories and items. If you select an item, the appropriate information is displayed on the right side.



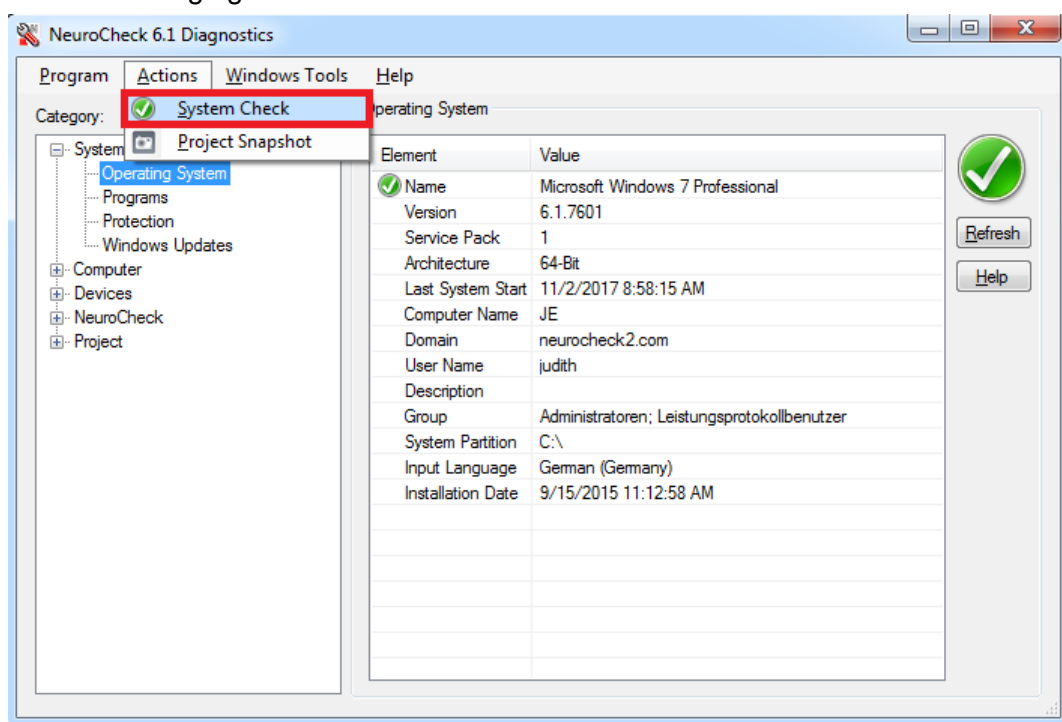
### 3. Actions

Via the menu item “Actions” all information can be integrated and stored to a file. This file can be used to transfer the system information to another computer in order to analyze it. Main application of this function is it to over send the data to NeuroCheck GmbH in case of technical support.

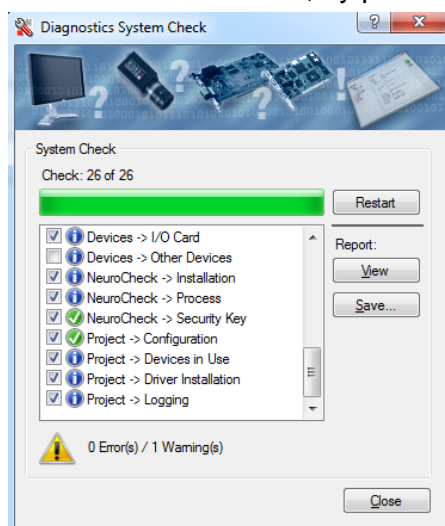
Two actions are available: The *System Check* and the *Project Snapshot*.

#### 3.1. System check

If the action „System check“ is executed, all available information will be gathered. This may take some time. Please start the system check via menu `Actions > System Check`, as shown in the following figure:



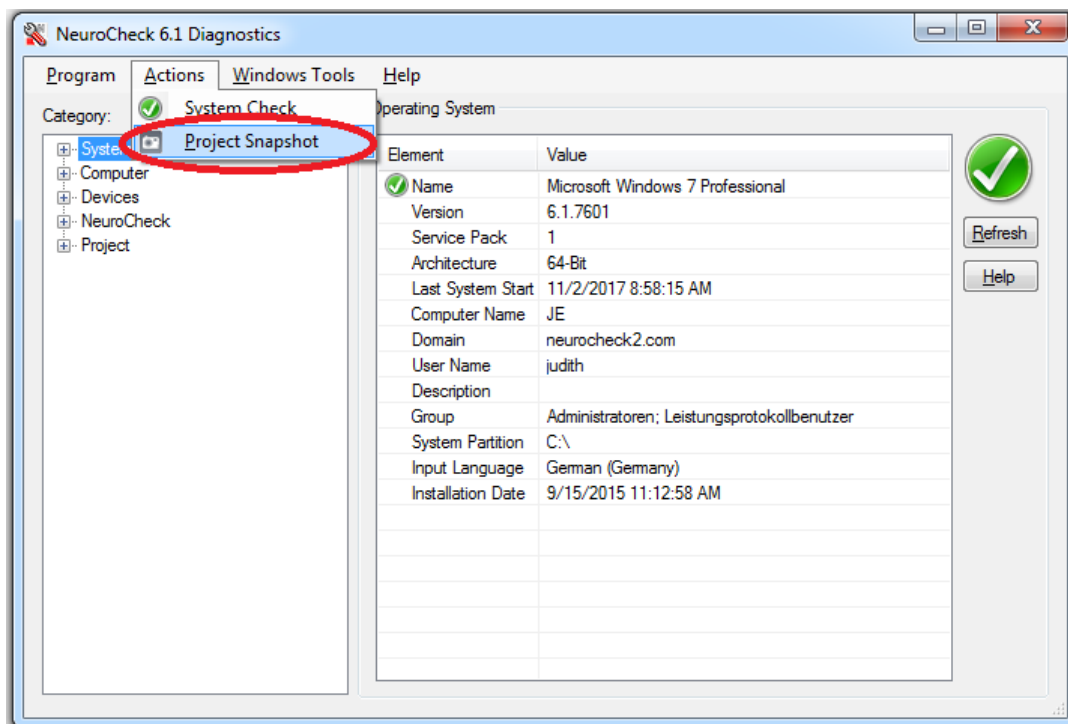
The result of the System Check can be stored to a file, by pressing the “Save...” button.



### 3.2. Project Snapshot

The Project Snapshot is a mechanism to zip all important files of the current NeuroCheck project into one ZIP-file. This ZIP file can then be transferred to another computer where it can be opened there without any big effort. Please start the project snapshot via menu

Actions > Project Snapshot, as shown in the following figure.



The created ZIP-file will be stored to displayed path:

